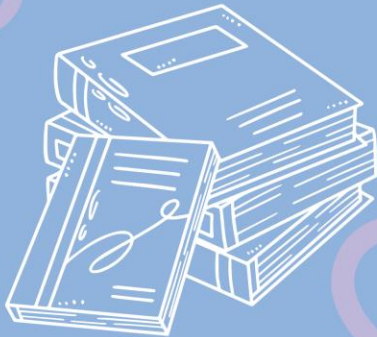




友诺小学

PRIMARY 1

INFORMATION BOOKLET FOR PARENTS



WELCOME!



CONTENTS

- 3 SCHOOL ETHOS
- 7 GETTING READY FOR SCHOOL
- 14 GENERAL INFORMATION
- 25 OUR SERVICE PROVIDERS
- 27 SCHOOL-HOME PARTNERSHIP
- 29 FREQUENTLY ASKED QUESTIONS

SCHOOL ETHOS



Vision

Confident Leaders
Resilient Learners
Caring Citizens

Mission

To nurture every child
in a values-driven environment
to achieve excellence and
contribute actively to the society



SCHOOL ETHOS

Philosophy

Every child can learn and achieve

School Values

Respect
Responsibility
Resilience
Integrity
Care
Harmony

R³ICH



SCHOOL ETHOS

Respect

- Listening attentively to the teacher during lessons or assembly programmes
- Sitting upright
- Raising my hand and waiting for my turn to speak
- Being polite to everyone
- Queuing up in an orderly manner



Integrity

- Telling the truth
- Admitting to mistakes made



Responsibility

- Submitting my assignments and homework on time
- Revising my work regularly
- Carrying out a classroom job well
- Keeping my physical appearance clean and tidy
- Keeping my classroom and school clean and tidy



Care

- Walking quietly when moving from place to place in school
- Treating school books and equipment with care
- Helping classmates and teachers



Resilience

- Understanding that we should not give up when faced with challenges
- Being willing to learn and try again
- Knowing how to seek help



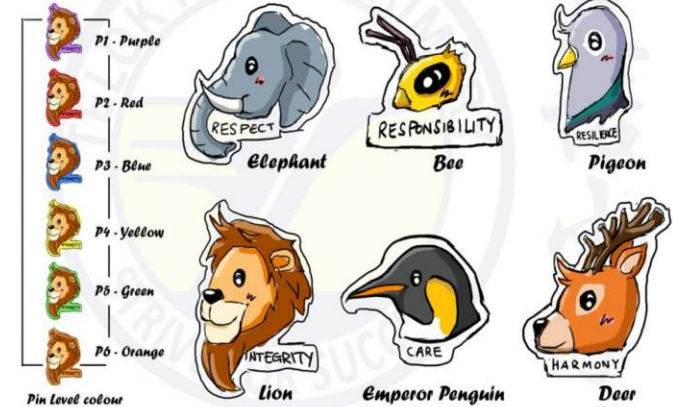
Harmony

- Recognising that everyone is unique in his/her own way
- Getting along well with peers



Our School Values – R³ICH

TKPS Animal Collar Pin Designs



Every child can be a **Values Ambassador** if he/she demonstrates the school values consistently.

SCHOOL ETHOS

Student-Centric, Values-Driven, Holistic Education

Building a broad and deep foundation for lifelong learning



Instilling Deep Values



Building Deep Foundation for Learning



Providing Broad Inclusive and Holistic Education



Learning for Life



GETTING READY FOR SCHOOL

School Hours for 2025

Day / Date	Time
From Thursday, 02 January 2025	7:30 a.m. to 1:40 p.m.
<i>*P1 students to report to the School Hall latest by 7:30 a.m. for flag-raising ceremony.</i>	

Attendance and Punctuality

- Students must **be punctual** for school and all school activities.
- **Absenteeism must be justified by a medical certificate from a doctor.**
- Avoid taking your child overseas/ out of school during school terms so that he/she will not miss out on the school curriculum.
- Please pick your child/ward from the respective school gates at 1.40 p.m.

GETTING READY FOR SCHOOL

Gates Opening Hours

Gates	Mondays – Fridays
Gate 1 Main Gate Opposite Blk 121 and 122	6:30 a.m. – 7:00 p.m.
Gate 4 *Side Gate Opposite Blk 609	7:00 a.m. – 7:30 a.m. 1:40 p.m. – 2:15 p.m.
Gate 6 *Side Gate Opposite Blk 601	7:00 a.m. – 7:30 a.m. 1:40 p.m. – 2:15 p.m.

*Side gate is strictly for student access.

GETTING READY FOR SCHOOL

Safety and Security

Access to School:

- Visitors are required to sign in and obtain a visitor's pass to enter the school.
- Visitors' movements are restricted to the General Office and the ground level non-teaching areas.

Vehicular Gates

- On rainy days, parents would be able to drive the students into the school and have them to alight at the foyer.
- Remind our child to alight from the car on the left, nearest to the kerb as quickly as possible.

GETTING READY FOR SCHOOL

School Uniform







White socks
(above ankle length)
White Shoes (all white)

Name Tag to be
ironed and sewed on
the **right side** of the
uniform and **aligned**
with the school logo.

Recommended to purchase: 3 polo tees, 2 sets of culottes/shorts, 2 sets of PE shorts

GETTING READY FOR SCHOOL

Name Tag

Colour of Name	Name Tag Sample	Level
GREEN		Primary 1
ORANGE		Primary 2
PURPLE		Primary 3
RED		Primary 4
BLUE		Primary 5
YELLOW		Primary 6

To help us to identify the level of our students, a different coloured border is used for each year of admission.

For 2025 P1 students, a green border is used. Please iron and sew the name tags instead of ironing only on the uniform.

Temporary Name Tag

Your child/ward must wear this name tag for the first 2 weeks of school till his/her uniform name tags are ready.



友諾小學

TELOK KURAU PRIMARY SCHOOL

RICHIE LEE

Student Care Centre: Yes No

Dismissal Gate: 1 / 4 / 6

School Bus: Yes # 3 / No

EXAMPLE

GETTING READY FOR SCHOOL

What to bring to school daily?

Students must bring an **English Language storybook** on Monday to Wednesday and a **Mother Tongue Language storybook** on every Thursday & Friday for silent reading before assembly.

- TKPS Student Handbook 2025
- Stationery items such as pencils, eraser, ruler
- Colour pencils
- Storybook
- Water bottle & healthy snack
- Small wallet/purse with pocket money
- Homework file (A4 one-button clear holder)
- Whiteboard set (3 in 1 bag)
- School books packed according to the timetable

GETTING READY FOR SCHOOL

What to bring for 1st week of school?

Please ensure that all your child's books and items are **labelled** with his/her name and class.

First day of school (Thursday, 2 Jan 2025):

- STELLAR Handwriting 1
- MC English Listening Comprehension & Oral P1
- 2 sets of A5 Broad Lined Exercise Book (English)
- 2 sets of Broad Lined & Blank Jotter Book (English)
- School 4-part Divider Worksheets File (Red)
- Character And Citizenship Education (FTGP) P1
- A4 Report Book (20-pocket)
- Health & Immunisation Booklet

Second day of school (Friday, 3 Jan 2025):

- Primary Mathematics Textbook 1A & 1B
- Primary Mathematics Practice Book 1A & 1B
- Maths Manipulative Set
- School 4-part Divider Worksheets File (Blue)
- Social Studies Activity Book 1
- My Physical Education Journal Primary 1
- OMNI Oil Pastels, Large Stick, 24-col set
- A4 Journal

Third day of school (Monday, 6 Jan 2025):

- Respective Mother Tongue Languages Textbooks 1A & 1B
- Respective Mother Tongue Languages Activity Books 1A & 1B
- Other respective Mother Tongue Languages Writing Books 1A & 1B
- Respective MT Character and Citizenship Education Student's Journal Primary 1
- Respective MT A5 exercise books and Jotter Books
- School 4-part Divider Worksheets File (Mother Tongue - Yellow)

GENERAL INFORMATION

School Information and Curriculum Hours

- School Website: [Telok Kurau Primary School \(moe.edu.sg\)](http://telokkurau.moe.edu.sg)
- Reporting Time: 7:30 a.m.
- Daily curriculum hours: 7:45 a.m. – 1:45 p.m.
- School Social Media Platforms:



GENERAL INFORMATION

Class Names

Class Name	What the name exemplifies
Reflector	Student who thinks and reflects daily.
Encourager	Student who stands up for what is right and encourages others.
Synergiser	Student who brings out the best in others and works well with others.
Innovator	Student who is creative and innovates.
Learner	Student who embraces life-long learning.
Inquirer	Student who is curious and seeks answers.
Explorer	Student who is keen to know and explores beyond the textbook.
Navigator	Student who guides others and has the courage to lead others forward
Trailblazer	Student who is not afraid to take the lead and be the first to innovate.

GENERAL INFORMATION

P1 Recess: 8:45 a.m. – 9:15 a.m.

- Prepare a small wallet that can fit into the pocket easily.
- Label your child's personal items, e.g., wallet, water bottle.
- Suggested amount of pocket money is **\$1.80 - \$2.80**.
- You may pack food for your child. Put the packed food in his/her lunch bag.

Snack Break: 11:15 a.m.

Snack Break **should** be:

- ✓ Easy to eat and healthy (e.g. a bun, fruit slices)
- ✓ Consumed within 10 minutes at the students' desks

Snack Break **should not**:

- x Require any preparation by students
- x Require extensive cleaning of utensils or eating surfaces after the consumption of food



GENERAL INFORMATION

Healthy Meals in School Programme

Under this programme, canteen vendors follow strict criteria to ensure they serve well-balanced meals consisting of food from the four major food groups. This includes brown rice and wholemeal bread, meat and other proteins, fruit and vegetables.



Medical Conditions / Allergies

Kindly write to Ms Foo Jong Yin (Year Head P1 to P2) at foo_jong_yin@schools.gov.sg to provide us with more details and we will contact you to learn more about your child's/ward's needs.

GENERAL INFORMATION

Menus of Richie Cafe Stalls

MEADOW BEVERAGES 01



OASIS SNACKS 06



<p>Egg burger \$1.20</p>	<p>Chicken burger \$1.60 (\$2.00 with cheese)</p>	<p>Fish burger \$1.60 (\$2.00 with cheese)</p>	<p>Egg burger with chicken patty \$2.00</p>
<p>Steamed buns 80¢ (BBQ, red bean, black pepper chicken)</p>	<p>Wholemeal cream buns \$1.30</p>	<p>Sunshine Poketto sandwiches \$1.50</p>	

GENERAL INFORMATION

Menus of Richie Cafe Stalls



	SET MEAL 1	SET MEAL 2	SET MEAL 3	SET MEAL 4	SET MEAL 5	SET MEAL 6
MONDAY	Fried Mee with Egg 	Fried Bee Hoon with Egg 	Fishball Noodles 	Tom Yum Mee with Crabmeat 	Grilled Chicken Rice 	
TUESDAY	Fried Mee with Egg 	Fried Bee Hoon with Egg 	Fishball Noodles 	Tom Yum Mee with Crabmeat 	Grilled Chicken Rice 	Laksa Nasi Lemak
WEDNESDAY	Fried Mee with Egg 	Fried Bee Hoon with Egg 	Fishball Noodles 	Tom Yum Mee with Crabmeat 	Grilled Chicken Rice 	Fish Slice Soup with Bee Hoon \$2.50 (Small) & \$3.00 (Up-size)

	SET MEAL 1	SET MEAL 2	SET MEAL 3	SET MEAL 4	SET MEAL 5	SET MEAL 6
THURSDAY	Fried Mee with Egg 	Fried Bee Hoon with Egg 	Fishball Noodles 	Tom Yum Mee with Crabmeat 	Grilled Chicken Rice 	Lor Mee with Egg
FRIDAY	Fried Mee with Egg 	Fried Bee Hoon with Egg 	Fishball Noodles 	Tom Yum Mee with Crabmeat 	Grilled Chicken Rice 	Japanese Curry with Rice \$2 (S), \$2.50 (M), \$3 (L)
ADD-ONS	Crabmeat (40c) 	Chicken Cheeseball / Nugget (50c) 	Fried Egg (60c) 	Chicken Drumlet (80c) 	Chicken Sausage (\$1.20) 	BBQ Chicken Fillet (\$1.50)

All set meals at \$1.80 (small), \$2.30 (Medium) and \$2.80 (Large), unless otherwise stated. Pictures show medium-sized plate.

All set meals are served with vegetables and fruits and are free from peanut, peanut oil, shell-fish and dried shrimp unless otherwise stated.

GENERAL INFORMATION

Menus of Richie Cafe Stalls



	SET MEAL 1	SET MEAL 2	SET MEAL 3	SET MEAL 4	SET MEAL 5
MONDAY	Chicken Cutlet Rice 	Chicken Drumlet Rice 	Nasi Lemak 	Mee Soto 	Mee Hoon Goreng Merah
TUESDAY	Chicken Cutlet Rice 	Chicken Drumlet Rice 	Nasi Lemak 	Mee Soto 	Nasi Goreng Merah
WEDNESDAY	Chicken Cutlet Rice 	Chicken Drumlet Rice 	Nasi Lemak 	Mee Soto 	Mee Hoon Goreng Merah

	SET MEAL 1	SET MEAL 2	SET MEAL 3	SET MEAL 4	SET MEAL 5
THURSDAY	Chicken Cutlet Rice 	Chicken Drumlet Ric 	Nasi Lemak 	Mee Soto 	Chicken Biryani Rice
FRIDAY	Chicken Cutlet Rice 	Chicken Drumlet Rice 	Nasi Lemak 	Mee Soto 	Bee Hoon Goreng Merah

All set meals at \$1.80 (small), \$2.30 (Medium) and \$2.80 (Large), unless otherwise stated. Pictures show medium-sized plate.

All set meals are served with vegetables and fruits and are free from peanut, peanut oil, shell-fish and dried shrimp unless otherwise stated.

GENERAL INFORMATION

Menus of Richie Cafe Stalls



	SET MEAL 1	SET MEAL 2	SET MEAL 3	SET MEAL 4	SET MEAL 5	SET MEAL 6		SET MEAL 1	SET MEAL 2	SET MEAL 3	SET MEAL 4	SET MEAL 5	SET MEAL 6
MONDAY	Fried Macaroni 	Yellow Mee 	Sardines 	Sambal Goreng 	Chicken Curry 	Chicken Chop (\$2.30) 	THURSDAY	Fried Macaroni 	Fried Bee Hoon 	Sardines 	Chicken Drumlets 	Chicken Curry 	Chicken Chop (\$2.30)
TUESDAY	Fried Macaroni 	Fried Bee Hoon 	Sardines 	Maggie Soup 	Chicken Curry 	Chicken Chop (\$2.30) 	FRIDAY	Yellow Mee 	Maggie Soup 	Sardines 	Chicken Drumlets 	Chicken Curry 	Chicken Chop (\$2.30)
WEDNESDAY	Fried Maggie 	Yellow Mee 	Sardines 	Sambal Goreng 	Chicken Curry 	Chicken Chop (\$2.30) 	ADD-ONS	Fish Ball Sambal (40¢) 	Egg Sambal (60¢) 	Fried Egg (60¢) 	Fish Finger (60¢) 	Fish Fillet (70¢) 	Honey Chicken Fillet/ Chicken Cutlet (\$1.50)

All set meals at \$1.80 unless otherwise stated.

All set meals are served with vegetables and fruits and are free from peanut, peanut oil, shell-fish and dried shrimp unless otherwise stated.

GENERAL INFORMATION

Menus of Richie Cafe Stalls



DAY	SET MEAL 1	SET MEAL 2	SET MEAL 3	SET MEAL 4	SET MEAL 5	SET MEAL 6
MON	Mac & Cheese \$1.80 	Hot Dog Set \$1.80 	Chicken Wrap \$1.80 	Spaghetti Bolognese 	Popcorn Chicken 	Potato Wedges with Nuggets
TUE	Mac & Cheese \$1.80 	Baked Rice Set \$1.80 	Chicken Wrap \$1.80 	Spaghetti Bolognese 	Popcorn Chicken 	Potato Wedges with Nuggets
WED	Mac & Cheese \$1.80 	Chicken Wrap \$1.80 	Mashed Potatoes with Grilled Chicken 	Spaghetti Bolognese 	Popcorn Chicken 	Potato Wedges with Nuggets

DAY	SET MEAL 1	SET MEAL 2	SET MEAL 3	SET MEAL 4	SET MEAL 5	SET MEAL 6
THUR	Mac & Cheese \$1.80 	Chicken Wrap \$1.80 	Mushroom Soup with Garlic Bread 	Spaghetti Bolognese 	Popcorn Chicken 	Potato Wedges with Nuggets
FRI	Mac & Cheese \$1.80 	Chicken Wrap \$1.80 	Mashed Potatoes with Fish Fillet 	Spaghetti Bolognese 	Popcorn Chicken 	Potato Wedges with Nuggets
ADD-ONS	Nugget (40c) 	Curry Puff/ Samosa (50c) 	Chicken Cheese Ball (60c) 	Pizza (60c) 	Potato Wedges (\$1.00) 	Waffle (\$1.00)

All set meals at \$1.80 (small), \$2.30 (Medium) and \$2.80 (Large), unless otherwise stated. Pictures show medium-sized plate.

All set meals are served with vegetables and fruits and are free from peanut, peanut oil, shell-fish and dried shrimp unless otherwise stated.

GENERAL INFORMATION

Menus of Richie Cafe Stalls

LEMONGRASS
TERRACE

08



SET MEAL 1	SET MEAL 2	SET MEAL 3
Sweet Sour Fish with Rice 	Green Curry with Rice 	Chicken Basil with Rice 
SET MEAL 4	SET MEAL 5	SET MEAL 6
Grilled Chicken with Rice 	Chicken Noodle Soup 	Thai Stir-Fried Glass Noodles (\$2.30) 

All set meals at \$1.80 (small), \$2.30 (Medium) and \$2.80 (Large), unless otherwise stated. Pictures show medium-sized plate.

All set meals are served with vegetables and fruits and are free from peanut, peanut oil, shell-fish and dried shrimp unless otherwise stated.

GENERAL INFORMATION

Parent-Child Activity Book is Available Online

PARENT-CHILD ACTIVITY BOOK (DIGITAL)

10 TIPS FOR PARENTS to help you navigate your child's first year in primary school.

- Chat with your child
- Boost their confidence
- Practise various scenarios
- Create something interesting
- Thank others for their help
- Pledge to do things together



Parent kit

View the various parent kits available.



Parent-child activities to strengthen family relationships and bond with your child

Parent-Child Activity Book

The Parent-Child Activity Book (PCAB) is specially designed to help your child transit from preschool to P1. The PCAB includes 10 tips, and is filled with fun and meaningful parent-child activities for you to try with your child.

A Great Start to Primary School



Talk about your child's likes in the 'About Me' activity and commemorate the first day of school with your child.

Last updated: 3 Nov 2022

How To Use This Book



This marks the start of your child's very own adventure! Read this mini guide to find out how you can use the activities to help your child transit to P1.

Last updated: 3 Nov 2022



OUR SERVICE PROVIDERS

After School Care



Pro-Teach Student Care Centre

Telephone: 8366 4939

Email: telokkurau@pro-teach.com

Website: <https://www.pro-teach.com>

Bus Operator

Sky Transport Services Pte. Ltd.

Telephone: 8150 2548 (Ms Chan Poh Lin)

Email: skyoperation15@gmail.com



OUR SERVICE PROVIDERS

Bookshop

The Continental Book Centre

Telephone: 6244 2623

Operating Hours: Mondays to Fridays (9a.m. - 3p.m.)

Email: info@the-continental.com.sg



Uniform Shop

Asencio Pte Ltd

Telephone: 6764 3102

Operating Hours: Mondays to Fridays (9a.m. - 3p.m.)

Email: sales@asencio.com.sg



SCHOOL-HOME PARTNERSHIP

Communication

Telephone no.
6244 1600

Email address:
telokkuraupri@moe.edu.sg

Parents Gateway (PG)



Letters to Parents



Student Handbook
2025

Please partner with Form Teachers (FTs) in seeing to the well-being of children. FTs are the main point of contact.

SCHOOL-HOME PARTNERSHIP

Parent Support Group

Join our Parent Support Group (PSG)!

- The PSG consists dedicated parents who partner the school to support fellow parents in nurturing their children
- It is a platform for parents to network, share, learn and support each other in this parenting journey



SCAN TO JOIN
Parents Support Group



International Friendship Day



CNY Festive Cheer



World Water Day



Parent-Student-Teacher Conference



Father-Child Bonding

FREQUENTLY ASKED QUESTIONS

Purchase of Books and School Uniform

1. How do I purchase school uniforms and books?

On-site purchase of books is by appointment only.

We encourage parents to opt for online order and home delivery. You can make your order from the vendor's website at: www.thecontinental.sg/telokkurau with PIN: TK8005.

2. Will the Name Tag (for school uniform) be provided on the first day of school?

All students must put on their name tags for identification purposes. From the first day of school. P1 students are to put on their temporary name tags till the name tags for the school uniform is ready. Name tags will only be ready for collection from mid-January 2025 onwards.

FREQUENTLY ASKED QUESTIONS

Arrangements for the First Few Days

1. What are the things to bring on the first week of school?

Please refer to pages 12 and 13 for things to bring. Thereafter, please teach your child/ward to pack his/her school bag according to the class timetable. Please ensure that your child's/ward's items are labelled with his/her name and class.

2. Will there be any orientation for the students in school?

Yes, all students will go through the Start Right Programme with their teachers to help them orientate and transit into the primary school environment.



FREQUENTLY ASKED QUESTIONS

Recess Arrangement

1. What is the duration of recess?

The duration of each recess is 30 minutes. The typical recess timing for P1 is from 8:45 a.m. to 9:15 a.m. For the first day of school, recess will be extended to ensure that students have sufficient time to transit and have a good canteen experience.

2. Can parents accompany their child on the first few days of school during recess?

Parents will be allowed to accompany their child/ward into the school premises on the first day of school. The accompanying parents can see their child/ward having their recess on the first day of school. From day 2 onwards, parents will not be allowed to enter the school premises as students from P2 to P6 will be in school.

